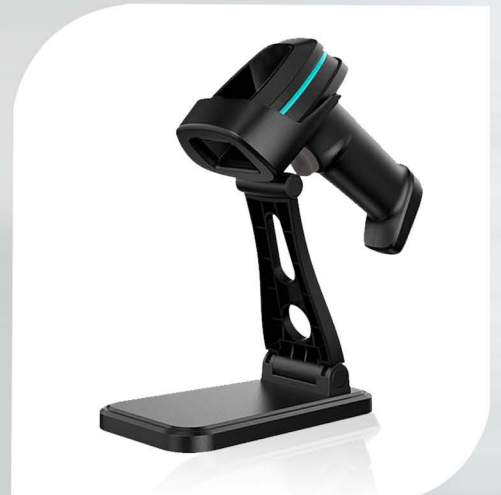


YS-1270

Handheld Corded
2D Barcode Scanner



With stand
Material: ABS+PC
Image: 640*480pixels
Resolution: 4mils
Imaging Speed: 30 fps
Read all main 1D/2D codes
1G CPU
Interfaces: USB HID (standard)



Two placing ways:



*συμβατό με GS1 Datamatrix ECC200



YS-1270

Handheld Corded 2D Barcode Scanner



Performance Parameter

Light Source
Aiming Light
Image sensor
Resolution(maximum)
Print contrast ratio(minimum)
Reading Angle
Decoding Capability



LED White light
Green Dot
640*480 pixels
0.102mm / 4mils
≥20%



Pitch: 0-360°; Roll(Tilt): ±60°; Skew (Yaw): ±60°

1D: All standard 1D codes, including GS1 DataBar linear code can be automatically distinguished and decoded.
2D: Aztec Code; Data Matrix; MaxiCode; QRCode; HANXIN; MicroQR Code
Stack code: GS1 DataBar Expanded Stacked; GS1 DataBar Stacked; GS1 DataBar Stacked Omnidirectional; GS1 DataBar Composite; MicroPDF417; PDF417.

Reading Indicators
Typical depth of Field

LED light&Buzzer(adjustable tone and volume)

Precision Barcode Depth of Field
3.34mil CODE 128 10mm—60mm
5mil CODE128 5mm—90mm
3.34mil EAN-13 10mm—55mm
5mil EAN-13 5mm—85mm
13.34mil EAN-13 20mm—190mm
5mil PDF417 5mm—75mm
10mil PDF417 5mm—190mm
15mil PDF417 10mm—200mm
10mil DM 5mm—100mm
20mil DM 5mm—210mm

(The minimum depth of field is determined by the barcode length and scanning angle.
It depends on the print resolution, contrast and ambient light.)

Electrical Parameter

Current
Input Voltage

Working current (Standard): (Standard):
5 VDC (+/- 10%)/500mA

Environmental Parameter

ESD protection(Air discharge)
Drop resistance
Temperature

8 kV
Withstands repeated drops from 1.2m/4.0 ft onto a concrete surface.
Working: 0 to 40 °C
Storage/Transport: -40 to 70 °C

Humidity(non-condensing)
Ambient light

5 - 95%
Indoor: 0 to 6,000 lux; Outdoor: 0 to 86,000 lux

Interfaces

Interfaces
Transmission

RS-232; USB HID; USB COM; HID POS available as per customer's needs
Support multi-language transmission, compatible with major operating systems,
support the editing of barcode data.

Warranty

24 months

*συμβατό με GS1 Datamatrix ECC200